

PRINT

Anglia
Tel: 0870 607 3103
Fax: 0870 607 3158
email: anglia@antalis.co.uk

London West
Tel: 0870 607 3114
Fax: 0870 607 3168
email: londonwest@antalis.co.uk

Midlands
Tel: 0870 607 3106
Fax: 0870 607 3160
email: midlands@antalis.co.uk

North West
Tel: 0870 607 3112
Fax: 0870 607 3166
email: northwest@antalis.co.uk

Northern Ireland
Tel: 02890 847 700
Fax: 02890 847 716
email: northernireland@antalis.co.uk

Scotland
Tel: 0870 607 3108
Fax: 0870 607 3162
email: scotland@antalis.co.uk

South East
Tel: 0870 607 3143
Fax: 0870 607 3154
email: southeast@antalis.co.uk

South West
Tel: 0870 607 3110
Fax: 0870 607 3164
email: southwest@antalis.co.uk

West
Tel: 0870 607 3102
Fax: 0870 607 3157
email: west@antalis.co.uk

Yorkshire
Tel: 0870 607 3107
Fax: 0870 607 3161
email: yorkshire@antalis.co.uk

REPUBLIC OF IRELAND

Tel: 01 876 3188
Fax: 01 856 7111
email: dublin@antalis.ie

OFFICE

North
Tel: 0870 607 3136
Fax: 0870 607 3178
email: office.north@antalis.co.uk

South
Tel: 0870 607 3132
Fax: 0870 607 3171
email: office.south@antalis.co.uk

Talk Paper
Tel: 01530 517 200
Fax: 01530 517 127
email: orders@talkpaper.com

SIGN & DISPLAY

Tel: 01925 868 650
Fax: 01925 868 670

CUSTOMER SOLUTIONS

London
Tel: 0203 117 1600
Fax: 0203 117 1601
email: customer_solutions@antalis.co.uk

Dartford
Tel: 01322 313 080
Fax: 01322 313 089
email: customer_solutions@antalis.co.uk

PAPER DESK

Tel: 0870 600 4400
email: paperdesk@antalis.co.uk

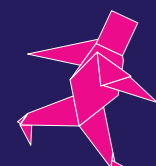
CARTON BOARD

EASY REFERENCE GUIDE



The mark of
responsible forestry
We market certified products.

Printed on Cocoon Silk 100 170gsm
January 2014



antalis ^{EM}
Just ask Antalis

Antalis Limited
Interlink Way West,
Coalville, Leicestershire
LE67 1LE
Tel: 0870 607 9014
Fax: 01530 505 058
email: contact@antalis.co.uk
www.antalis.co.uk

antalis ^{EM}
Just ask Antalis

WELCOME TO ANTALIS.

CARTON BOARD EASY REFERENCE GUIDE

CONTENTS

CARTON BOARD

CHROMOLUX	4
TRUCARD	6
INVERCOTE G	12
INVERCOTE CREATO	13
CARTA INTEGRA	14
INCADA SILK	16
INCADA EXEL	19
SIMCOTE	20
CREAM BACK FOLDING BOXBOARD	22
ESKA GREYBOARD & WHITE LINED	24
KENDAL MANILLA	26
CHALLENGER MANILLA	27

AN EXTENSIVE RANGE OF HIGH QUALITY BRANDED AND OWN BRAND GRAPHICAL BOARDS.

This Easy Reference Guide for Graphical Boards details products that have been carefully selected to provide the best possible solution for all of your packaging, greeting cards, picture backing, point of sales and numerous other applications.

The range of products include cast coated, solid bleached sulphate (SBS), white backed (GC1), cream backed (GC2), tinted manilla and greyboard.



CHROMOLUX

Chromolux is a super glossy, cast coated range of boards and papers available in an extensive range of modern colours and white.

- Super glossy and smooth surface
- High colour fidelity
- Photo-like image reproduction
- Excellent flatness and dimensional stability

What is it?
Chromolux is a super glossycast coated board range ideal for luxury packaging applications.

Suitable for
Screen and Offset Litho.

Major attributes
FSC®

Sheet sizes
SRA2, B1.

Available
Next day from stock.

Further details
Contact your regional sales office for further information.

CHROMOLUX 700 PAPER & BOARD

Technical Specifications

SPEC	GSM	80	90	180	215	250	275	300	350	400
Caliper (µm) DIN 53105, part 1		84	98	203	242	284	316	345	403	460
Gloss % DIN 54502, R' (45°)		>57	>57	>65	>65	>65	>65	>65	>65	>65
Roughness - top side (µm ml/min) PPS 78, DIN 53108		<0,60	<0,60	<0,80	<0,80	<0,90	<1,0	<1,0	<1,0	<1,0
Roughness - reverse side (µm ml/min) PPS 78, DIN 53108		<550	<570	<400	<450	<450	<450	<450	<500	<500
Whiteness % (top) DIN 53145, part 2 Elrepho SF 450		89.3	89.3	94.8	94.8	94.8	94.8	94.8	94.8	94.8
Bending Strength - MD (mNm) DIN 53121, (5°/50mm)				>2,5	>5,0	>8,5	>12,0	>14,5	>24,0	>33,0
Bending Strength - CD (mNm)				>1,0	>2,0	>4,0	>5,5	>7,0	>11,5	>15,5
pH-value top side		10.5	10.5	9,6	9,6	9,6	9,6	9,6	9,6	9,6

CHROMOLUX 1/S CAST COATED WHITE

Range Chart

ITEM NUMBER	PRODUCT REFERENCE	GSM/MIC	DIMENSIONS	PACKED	PACK/PALLET QUANTITY
59836	Chromolux 1/S Cast Coated White	180/203	B1 700 x 1000	Packet Wrapped	125/550
59838	Chromolux 1/S Cast Coated White	250/284	B1 700 x 1000	Packet Wrapped	125/550
59839	Chromolux 1/S Cast Coated White	300/345	B1 700 x 1000	Packet Wrapped	125/550
59840	Chromolux 1/S Cast Coated White	350/403	B1 700 x 1000	Packet Wrapped	125/550

CHROMOLUX 700 1/S CAST COATED WHITE

Range Chart

ITEM NUMBER	PRODUCT REFERENCE	GSM/MIC	DIMENSIONS	PACKED	PACK/PALLET QUANTITY
88473	Chromolux 700 1/S Cast Coated White	80/	B1 700 x 1000	Packet Wrapped	500/12500
88471	Chromolux 700 1/S Cast Coated White	90/	B1 700 x 1000	Packet Wrapped	250/11500
88470	Chromolux 700 1/S Cast Coated White	250/284	SRA2 450 x 640	Packet Wrapped	250/8000

CHROMOLUX COLOUR

Technical Specifications

SPEC	GSM	250
Caliper (µm) DIN 53105, part 1		284
Roughness - reverse side (ml/min) DIN 53108		<450
Bending Strength - MD (mNm) DIN 53121, (5°/50mm)		>8,5
Bending Strength - CD (mNm)		>4,0

Range Chart

ITEM NUMBER	PRODUCT REFERENCE	GSM/MIC	DIMENSIONS	PACKED	PACK/PALLET QUANTITY
59842	Chromolux 1/S Cast Coated Black	250/284	B1 700 x 1000	Packet Wrapped	100/1500
59844	Chromolux 1/S Cast Coated Blue	250/284	B1 700 x 1000	Packet Wrapped	100/1500
59847	Chromolux 1/S Cast Coated Cream	250/284	B1 700 x 1000	Packet Wrapped	100/1500
59867	Chromolux 1/S Cast Coated Deep Blue	250/284	B1 700 x 1000	Packet Wrapped	100/1500
59866	Chromolux 1/S Cast Coated Green	250/284	B1 700 x 1000	Packet Wrapped	100/1500
59872	Chromolux 1/S Cast Coated Magic Chrome	250/284	B1 700 x 1000	Packet Wrapped	100/1500
59868	Chromolux 1/S Cast Coated Metallic Gold	250/284	B1 700 x 1000	Packet Wrapped	100/1500
59873	Chromolux 1/S Cast Coated Magic Rock	250/284	B1 700 x 1000	Packet Wrapped	100/1500
59870	Chromolux 1/S Cast Coated Metallic Silver	250/284	B1 700 x 1000	Packet Wrapped	100/1500
88475	Chromolux 1/S Cast Coated Ocean	250/284	B1 700 x 1000	Packet Wrapped	100/1500
59874	Chromolux 1/S Cast Coated Pearl White	250/284	B1 700 x 1000	Packet Wrapped	100/1500
59846	Chromolux 1/S Cast Coated Red	250/284	B1 700 x 1000	Packet Wrapped	100/1500
88477	Chromolux 1/S Cast Coated Steel Blue	250/284	B1 700 x 1000	Packet Wrapped	100/1500
59865	Chromolux 1/S Cast Coated Yellow	250/284	B1 700 x 1000	Packet Wrapped	100/1500



TRUCARD

Trucard is a FSC® certified solid bleached sulphate board (sbs) available in an extensive range of sizes, substances and finishes. The twin-wire manufacturing process of Trucard guarantees a smooth, clean finish along with excellent printability and durability.

- Made from 100% woodfree pulp and is fully recyclable
- Outstanding level of whiteness together with a smooth, quality printing surface
- An extensive range of sizes and substances
- Certified as safe for use in direct contact with dry and non-fatty foods

What is it?

A solid bleached sulphate board (SBS). Trucard is ideal for high quality graphical and packaging applications that require a one sided or two sided coated board.

Suitable for

Graphical print, packaging, gravure, offset litho, laser, letterpress and screen printing processes. Highly recommended for embossing, film and foil laminating, varnishing, folding, scoring and die cutting. Typical applications include brochures, cards, covers, pharmaceuticals and premium food products.

Major attributes

Made from 100% woodfree pulp and is fully recyclable. FSC certification.

Sheet sizes

SRA2, B2, B1

Environmental

ECF, ISO 14001, ISO 9706, 1998:SI1165 and BS EN71-3 1995, FSC certification Trucard Recycled also available

Available

Next day from stock.

Further details

Contact your regional sales office for further information.



TRUCARD 1 GLOSS A solid bleached sulphate board fully coated on one side with strong durable fibers, good bulk and stiffness in relation to grammage.

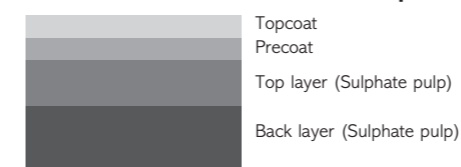
Technical Specifications

SPEC	GSM	180	200	220	240	260	280	300	330	350	380	400
Bulk (µm)		215	245	275	300	330	355	380	420	450	500	535
Relative Humidity %		38	38	38	38	38	38	38	38	38	38	38
Gloss (ISO 8254-1)		67	67	67	67	67	67	67	67	67	67	67
Smoothness (BS 6563)		1.3	1.3	1.3	1.3	1.3	1.3	1.3	1.3	1.3	1.3	1.3
Stiffness MD		2.8	3.7	5.2	6.7	8.6	10.8	13.3	17.9	21.5	27.6	31.8
Stiffness CD		1.7	2.3	3.1	4	5.1	6.3	7.2	10.4	12.1	15.8	17.9
CIE Whiteness		120	120	120	120	120	120	120	120	120	120	120

Range Chart

ITEM NUMBER	PRODUCT REFERENCE	GSM/MIC	DIMENSIONS	PACKED	PACK/PALLET QUANTITY
39104	Trucard Gloss One Sided	180/215	SRA2 450 x 640	Packet Wrapped	200/10400
92054	Trucard Gloss One Sided	200/245	B1 720 x 1020	Packet Wrapped	125/4000
73108	Trucard Gloss One Sided	220/275	SRA2 450 x 640	Packet Wrapped	200/8000
39107	Trucard Gloss One Sided	220/275	B2 520 x 720	Packet Wrapped	200/7600
39116	Trucard Gloss One Sided	220/275	B1 720 x 1020	Packet Wrapped	100/3400
73476	Trucard Gloss One Sided	240/300	SRA2 450 x 640	Packet Wrapped	200/7600
81660	Trucard Gloss One Sided	240/300	B2 520 x 720	Packet Wrapped	200/7600
81664	Trucard Gloss One Sided	240/300	B2 520 x 720	Bulk Packed	7600/7600
39114	Trucard Gloss One Sided	240/300	SRA1 640 x 900	Packet Wrapped	100/3800
39117	Trucard Gloss One Sided	240/300	B1 720 x 1020	Packet Wrapped	100/3800
17497	Trucard Gloss One Sided	240/300	B1 720 x 1020	Bulk Packed	3800/3800
73662	Trucard Gloss One Sided	260/330	SRA2 450 x 640	Packet Wrapped	200/6800
39108	Trucard Gloss One Sided	260/330	B2 520 x 720	Packet Wrapped	200/5600
39118	Trucard Gloss One Sided	260/330	B1 720 x 1020	Packet Wrapped	100/3500
73940	Trucard Gloss One Sided	280/355	SRA2 450 x 640	Packet Wrapped	200/6400
79664	Trucard Gloss One Sided	280/355	SRA2 450 x 640	Bulk Packed	6400/6400
81661	Trucard Gloss One Sided	280/355	B2 520 x 720	Packet Wrapped	200/6400
81665	Trucard Gloss One Sided	280/355	B2 520 x 720	Bulk Packed	6400/6400
92055	Trucard Gloss One Sided	280/355	B1 720 x 1020	Packet Wrapped	100/3200
74425	Trucard Gloss One Sided	300/380	SRA2 450 x 640	Packet Wrapped	200/5600
17495	Trucard Gloss One Sided	300/380	SRA2 450 x 640	Bulk Packed	5600/5600
81662	Trucard Gloss One Sided	300/380	B2 520 x 720	Packet Wrapped	200/4800
81666	Trucard Gloss One Sided	300/380	B2 520 x 720	Bulk Packed	4800/4800
81663	Trucard Gloss One Sided	300/380	B1 720 x 1020	Packet Wrapped	100/2800
81667	Trucard Gloss One Sided	300/380	B1 720 x 1020	Bulk Packed	2800/2800
74531	Trucard Gloss One Sided	330/420	SRA2 450 x 640	Packet Wrapped	100/5200
74581	Trucard Gloss One Sided	350/450	SRA2 450 x 640	Packet Wrapped	100/4800
39113	Trucard Gloss One Sided	350/450	B2 520 x 720	Packet Wrapped	100/4400
92056	Trucard Gloss One Sided	350/450	B1 720 x 1020	Packet Wrapped	100/2200
81668	Trucard Gloss One Sided	350/450	B1 720 x 1020	Bulk Packed	2600/2600
74639	Trucard Gloss One Sided	380/500	SRA2 450 x 640	Packet Wrapped	100/4400
39121	Trucard Gloss One Sided	380/500	B1 720 x 1020	Packet Wrapped	50/2000
39106	Trucard Gloss One Sided	400/535	SRA2 450 x 640	Packet Wrapped	100/4200
39125	Trucard Gloss One Sided	400/535	B1 720 x 1020	Packet Wrapped	50/2000

Trucard 1 Gloss/Matt board composition:



TRUCARD 2 GLOSS A solid bleached sulphate board fully coated with a smooth glossy surface on both sides.

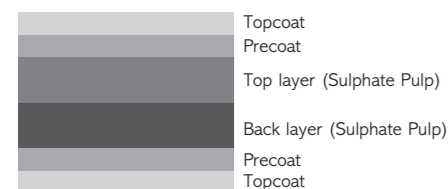
Technical Specifications

SPEC	GSM	200	220	240	260	280	300	350	400	450	500	530
Bulk (µm)		195	220	250	275	300	330	395	460	525	590	660
Relative Humidity %		38	38	38	38	38	38	38	38	38	38	38
Gloss (ISO 8254-1)		67	67	67	67	67	67	67	67	67	67	67
Smoothness (BS 6563)		1.2	1.2	1.2	1.2	1.2	1.2	1.2	1.2	1.2	1.2	1.2
Stiffness MD		3	4.2	5.2	6.9	8.5	10.9	17.1	24.3	32.5	40.4	47
Stiffness CD		2.1	3.0	3.8	4.8	5.9	7.2	11.1	16.2	21.5	25.8	28
CIE Whiteness		120	120	120	120	120	120	120	120	120	120	120

Range Chart

ITEM NUMBER	PRODUCT REFERENCE	GSM/MIC	DIMENSIONS	PACKED	PACK/PALLET QUANTITY
73480	Trucard Gloss Two Sided	240/250	SRA2 450 x 640	Packet Wrapped	200/7200
17500	Trucard Gloss Two Sided	240/250	B2 520 x 720	Packet Wrapped	200/7600
73944	Trucard Gloss Two Sided	280/300	SRA2 450 x 640	Packet Wrapped	200/6000
17504	Trucard Gloss Two Sided	280/300	SRA1 640 x 900	Packet Wrapped	100/3200
74427	Trucard Gloss Two Sided	300/330	SRA2 450 x 640	Packet Wrapped	200/5600
11393	Trucard Gloss Two Sided	300/330	B2 520 x 720	Packet Wrapped	125/6000
11394	Trucard Gloss Two Sided	300/330	B1 720 x 1020	Packet Wrapped	100/2800
11391	Trucard Gloss Two Sided	300/330	B1 720 x 1020	Bulk Packed	2800/2800
74583	Trucard Gloss Two Sided	350/395	SRA2 450 x 640	Packet Wrapped	100/4800
31420	Trucard Gloss Two Sided	350/395	B2 520 x 720	Packet Wrapped	100/4800
81573	Trucard Gloss Two Sided	350/395	B2 520 x 720	Bulk Packed	5600/5600
39130	Trucard Gloss Two Sided	350/395	SRA1 640 x 900	Packet Wrapped	100/2400
81574	Trucard Gloss Two Sided	350/395	SRA1 640 x 900	Bulk Packed	3000/3000
92059	Trucard Gloss Two Sided	350/395	B1 720 x 1020	Packet Wrapped	50/2400
81575	Trucard Gloss Two Sided	350/395	B1 720 x 1020	Bulk Packed	2400/2400
31421	Trucard Gloss Two Sided	400/460	SRA2 450 x 640	Packet Wrapped	100/4400
31422	Trucard Gloss Two Sided	400/460	B2 520 x 720	Packet Wrapped	100/4400
31423	Trucard Gloss Two Sided	400/460	SRA1 640 x 900	Packet Wrapped	50/2000
81578	Trucard Gloss Two Sided	400/460	SRA1 640 x 900	Bulk Packed	2600/2600
31427	Trucard Gloss Two Sided	400/460	B1 720 x 1020	Packet Wrapped	50/2100
81579	Trucard Gloss Two Sided	400/460	B1 720 x 1020	Bulk Packed	2100/2100
31428	Trucard Gloss Two Sided	450/525	SRA2 450 x 640	Packet Wrapped	100/4200
31429	Trucard Gloss Two Sided	450/525	B2 520 x 720	Packet Wrapped	100/4000
31430	Trucard Gloss Two Sided	450/525	SRA1 640 x 900	Packet Wrapped	50/2000
51216	Trucard Gloss Two Sided	450/525	SRA1 640 x 900	Bulk Packed	2100/2100
31431	Trucard Gloss Two Sided	450/525	B1 720 x 1020	Packet Wrapped	50/2000
17508	Trucard Gloss Two Sided	450/525	B1 720 x 1020	Bulk Packed	2000/2000
31432	Trucard Gloss Two Sided	500/590	SRA2 450 x 640	Packet Wrapped	100/4200
31433	Trucard Gloss Two Sided	500/590	B2 520 x 720	Packet Wrapped	100/3600
31436	Trucard Gloss Two Sided	500/590	SRA1 640 x 900	Packet Wrapped	50/2100
79665	Trucard Gloss Two Sided	500/590	SRA1 640 x 900	Bulk Packed	2000/2000
31437	Trucard Gloss Two Sided	500/590	B1 720 x 1020	Packet Wrapped	50/1800
81583	Trucard Gloss Two Sided	500/590	B1 720 x 1020	Bulk Packed	2000/2000
17499	Trucard Gloss Two Sided	530/660	SRA2 450 x 640	Packet Wrapped	50/3400
17502	Trucard Gloss Two Sided	530/660	B2 520 x 720	Packet Wrapped	50/3400
17506	Trucard Gloss Two Sided	530/660	SRA1 640 x 900	Packet Wrapped	50/1600
17509	Trucard Gloss Two Sided	530/660	B1 720 x 1020	Packet Wrapped	50/1600
51213	Trucard Gloss Two Sided	530/660	B1 720 x 1020	Bulk Packed	1700/1700

Trucard 2 Gloss/Matt board composition:



TRUCARD MATT 2 SIDED A solid bleached sulphate board fully coated on both sides with outstanding levels of whiteness and brightness.

Technical Specifications

SPEC	GSM	180	200	220	240	260	280	300	330	350	380	400
Bulk (µm)												
Relative Humidity %												
Gloss (ISO 8254-1)												
Smoothness (BS 6563)												
Stiffness MD												
Stiffness CD												
CIE Whiteness												

Range Chart

ITEM NUMBER	PRODUCT REFERENCE	GSM/MIC	DIMENSIONS	PACKED	PACK/PALLET QUANTITY
61821	Trucard Matt 2 Sided	350/440	SRA1 640 x 900	Packet Wrapped	1/2800
61814	Trucard Matt 2 Sided	350/440	SRA1 640 x 900	Bulk Packed	2800/2800
61931	Trucard Matt 2 Sided	350/440	B1 720 x 1020	Packet Wrapped	1/2400
61828	Trucard Matt 2 Sided	350/440	B1 720 x 1020	Bulk Packed	2400/2400
61990	Trucard Matt 2 Sided	450/580	1067 x 1575	Packet Wrapped	1/900
61988	Trucard Matt 2 Sided	450/580	1067 x 1575	Bulk Packed	900/900
61985	Trucard Matt 2 Sided	450/580	SRA1 640 x 900	Packet Wrapped	1/2000
61983	Trucard Matt 2 Sided	450/580	SRA1 640 x 900	Bulk Packed	2000/2000
61987	Trucard Matt 2 Sided	450/580	B1 720 x 1020	Packet Wrapped	1/1800
61986	Trucard Matt 2 Sided	450/580	B1 720 x 1020	Bulk Packed	1800/1800

TRUCARD ICE A solid bleached sulphate board fully coated on one side with an exceptional, ultra smooth, high gloss coated surface.

Technical Specifications

SPEC	GSM	260	300
Bulk (µm)		305	355
Relative Humidity %		40	40
Gloss (ISO 8254-1)		35	35
Smoothness (BS 6563)		0.6	0.6
Stiffness MD		6.8	10.4
Stiffness CD		3.7	5.6
CIE Whiteness Coated		103	103
CIE Whiteness Reverse		168	168

Range Chart

ITEM NUMBER	PRODUCT REFERENCE	GSM/MIC	DIMENSIONS	PACKED	PACK/PALLET QUANTITY
67152	Trucard Ice 1-Sided High Gloss	260/305	SRA2 450 x 640	Packet Wrapped	200/7200
67154	Trucard Ice 1-Sided High Gloss	300/355	SRA2 450 x 640	Packet Wrapped	100/6400

TRUCARD O MATT An uncoated solid bleached sulphate board with a natural finish.

Technical Specifications

SPEC	GSM	280	300
Bulk (µm)		375	400
Relative Humidity %		38	38
Smoothness (BS 6563)		1.35	1.35
Stiffness MD		13.8	14.5
Stiffness CD		7.2	8.7
CIE Whiteness		160	160

Trucard O Matt/Felt Board composition:



Range Chart

ITEM NUMBER	PRODUCT REFERENCE	GSM/MIC	DIMENSIONS	PACKED	PACK/PALLET QUANTITY
52671	Trucard O Matt	280/375	B1 720 x 1020	Packet Wrapped	100/3000
52672	Trucard O Matt	280/375	B1 720 x 1020	Bulk Packed	3000/3000
52675	Trucard O Matt	300/400	B1 720 x 1020	Packet Wrapped	100/2800
52676	Trucard O Matt	330/440	B1 720 x 1020	Packet Wrapped	100/2500
52677	Trucard O Matt	380/505	B1 720 x 1020	Packet Wrapped	50/2200

TRUCARD O MATT LINEN EMBOSSED An uncoated woodfree solid bleached sulphate board with outstanding stiffness, bulk and an exceptionally bright white surface.

Technical Specifications

SPEC	GSM	280
Bulk (µm)		
Relative Humidity %		
Gloss (ISO 8254-1)		
Smoothness (BS 6563)		
Stiffness MD		
Stiffness CD		
CIE Whiteness Coated		
CIE Whiteness Reverse		

Range Chart

ITEM NUMBER	PRODUCT REFERENCE	GSM/MIC	DIMENSIONS	PACKED	PACK/PALLET QUANTITY
84260	Trucard O Matt Linen Embossed	280/375	B1 720 x 1020	Bulk Packed	2500/2500

TRUCARD O DIGITAL FOR INDIGO A premium quality uncoated solid bleached sulphate board offering a pleasing and tactile finish.

Technical Specifications

SPEC	GSM	280
Bulk (µm)		
Relative Humidity %		
Gloss (ISO 8254-1)		
Smoothness (BS 6563)		
Stiffness MD		
Stiffness CD		
CIE Whiteness Coated		
CIE Whiteness Reverse		



Range Chart

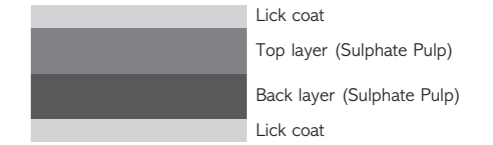
ITEM NUMBER	PRODUCT REFERENCE	GSM/MIC	DIMENSIONS	PACKED	PACK/PALLET QUANTITY
84258	Trucard O Digital For Indigo	280/375	SRA3+ 460 x 320	Packet Wrapped	100/10000

TRUCARD O FELT EXTRA A light coated solid bleached sulphate board with a subtle textured finish (also available in felt).

Technical Specifications

SPEC	GSM	280	300
Bulk (µm)		390	420
Relative Humidity %		38	38
Smoothness (BS 6563)		1.4	1.4
Stiffness MD		10.8	14
Stiffness CD		6.9	8.2
CIE Whiteness		136	136

Trucard O Felt Extra board composition:



Range Chart

ITEM NUMBER	PRODUCT REFERENCE	GSM/MIC	DIMENSIONS	PACKED	PACK/PALLET QUANTITY
52679	Trucard O Felt Extra	280/390	B1 720 x 1020	Packet Wrapped	100/2800
52680	Trucard O Felt Extra	280/390	B1 720 x 1020	Bulk Packed	2800/2800
52681	Trucard O Felt Extra	300/420	B1 720 x 1020	Packet Wrapped	100/2600

TRUCARD 1 GLOSS FOR HP INDIGO A solid bleached sulphate board fully coated on one side with exceptional HP Indigo performance.

Technical Specifications

SPEC	GSM	240	280
Bulk (µm)		300	355
Relative Humidity %		38	38
Gloss (ISO 8254-1)		67	67
Smoothness (BS 6563)		1.3	1.3
Stiffness MD		6.7	10.8
Stiffness CD		4	6.3
CIE Whiteness		120	120



Range Chart

ITEM NUMBER	PRODUCT REFERENCE	GSM/MIC	DIMENSIONS	PACKED	PACK/PALLET QUANTITY
29700	Trucard Digital 1-Sided Gloss for Indigo	240/300	SRA3+ 460 x 320	Packet Wrapped	100/12000
29701	Trucard Digital 1-Sided Gloss for Indigo	280/355	SRA3+ 460 x 320	Packet Wrapped	100/10400



INVERCOTE G

Invercote G is designed for graphical products and prestige packaging where an exceptional aesthetic result is desired. Invercote G has a smooth surface that is tailored to meet the need to faithfully reproduce the most sophisticated printed images and the high demands of flawless foil and film lamination. This surface, combined with Invercote G's excellent structural, design and embossing characteristics make it ideal for the packaging of luxury products.

Invercote G is recommended for high-end packaging and also for aroma and flavour sensitive products. Invercote G is certified for use in a range of digital presses including HP Indigo.

- Uncoated reverse
- Bright white shade
- Excellent printability and bulk
- Suitable for various conversion and finishing techniques
- Exceptional strength and folding characteristics
- Stock size SRA3+ for digital applications

What is it?
Invercote G is a 1 side coated SBS board with an uncoated reverse

Suitable for
Digital, Screen & Offset Litho

Major attributes
ISO 14001, FSC Mix

Sheet sizes
SRA3, 460 x 320mm

Available
Next day from stock.

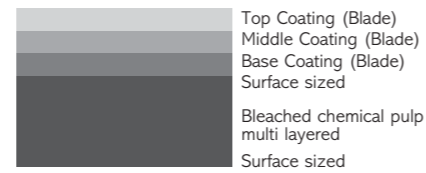
Further details
Contact your regional sales office for further information.

INVERCOTE G

Technical Specifications

SPEC	GSM	260	280	330
Thickness (um)		330	360	435
Caliper (pt)		13	14.2	17.1
Whiteness (%)		129	129	129
ISO Brightness (%)		94	94	94
Opacity		97	97.8	98.8
Surface Roughness (um)		0.9	0.9	0.9
Gloss 75o (%)		40	40	40

Invercote G board composition:



Range Chart

ITEM NUMBER	PRODUCT REFERENCE	GSM/MIC	DIMENSIONS	PACKED	PACK/PALLET QUANTITY
39104	Invercote G	260/330	SRA3+ 460 x 320	Packet Wrapped	200/12000
39106	Invercote G	280/360	SRA3+ 460 x 320	Packet Wrapped	125/11000
39125	Invercote G	330/435	SRA3+ 460 x 320	Packet Wrapped	125/9000



INVERCOTE CREATO

Invercote Creato is designed for graphical products, and offers equal, outstanding aesthetic printing properties on both sides. Both sides are fully coated and have a matt finish. Invercote Creato has a smooth surface that is tailored to faithfully reproduce the most sophisticated printed images. This surface, combined with Invercote Creato's excellent structural, design and embossing characteristics, make it ideal for demanding graphical applications. The whiteness level is tailored to ensure the best print contrast and colour reproduction properties required for high-end print productions. A new patented coating formula provides outstanding lightfastness, giving the end products a longer life. Invercote Creato is certified for use in a range of digital presses including HP Indigo.

- Coated 2 sides
- Bright white shade
- Excellent printability and bulk
- Suitable for various conversion and finishing techniques
- Exceptional strength and folding characteristics
- Stock size SRA3+ for digital applications

What is it?
Invercote Creato is a 2 side coated board with a matt finish

Suitable for
Digital, Screen & Offset Litho

Major attributes
ISO 14001, FSC Mix

Sheet sizes
SRA3, 460 x 320mm

Available
Next day from stock.

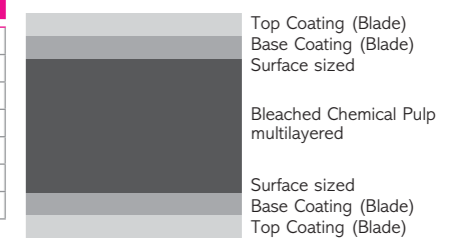
Further details
Contact your regional sales office for further information.

INVERCOTE CREATO

Technical Specifications

SPEC	GSM	260	280	300
Thickness (um)		290	315	345
Caliper (pt)		11.4	12.4	13.6
Whiteness (%)		127	127	127
ISO Brightness (%)		94	94	94
Opacity		98	98.3	98.5
Surface Roughness (um)		1.2	1.2	1.2
Gloss 75o (%)		40	40	40

Invercote Creato board composition:



Range Chart

ITEM NUMBER	PRODUCT REFERENCE	GSM/MIC	DIMENSIONS	PACKED	PACK/PALLET QUANTITY
39104	Invercote G	260/330	SRA3+ 460 x 320	Packet Wrapped	200/13600
39106	Invercote G	280/360	SRA3+ 460 x 320	Packet Wrapped	100/12000
39125	Invercote G	300/445	SRA3+ 460 x 320	Packet Wrapped	125/11500



CARTA INTEGRA

Carta Integra is a fully coated white back folding box board (GC1), with a double blade coating on the front, which delivers outstanding print performance. The part mechanical centre allows for excellent foldability, while the single coating on the reverse delivers good four colour results.

- Excellent smoothness and printability
- The white backed reverse side is also lick coated and can comfortably support four colour printing
- A wide range of calipers and sizes available from stock

What is it?

Carta Integra is a one sided white back folding box board (GC1) with a white centre and a lick coated reverse

Suitable for
Screen & Offset Litho

Major attributes
PEFC, ISO 9001,
ISO 14001 and ECF

Sheet sizes

SRA2, B2, SRA1, B1

Available

Next day from stock.

Further details

Contact your regional sales office for further information.

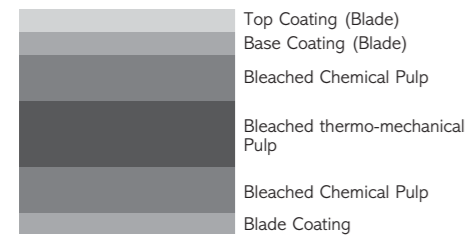


CARTA INTEGRA (GC1)

Technical Specifications

SPEC	GSM	190	210	235	265	285	315	330
Thickness		260	305	355	410	455	505	535
Brightness Top % (ISO 2470)		91	91	91	91	91	91	91
Bulk (µm)		1.36	1.45	1.51	1.54	1.59	1.6	1.62
Smoothness (µm) ISO8791		0.9	0.9	0.9	0.9	0.9	0.9	0.9
MD		2.5	3.8	5.4	8.4	11.0	14.0	16.0
CD		5.1	8.0	11.2	17.5	22.6	28.8	33.2

Carta Integra board composition:



Range Chart

ITEM NUMBER	PRODUCT REFERENCE	GSM/MIC	DIMENSIONS	PACKED	PACK/PALLET QUANTITY
51280	Carta Integra	190/260	SRA2 450 x 640	Packet Wrapped	100/10000
51278	Carta Integra	190/260	B2 520 x 720	Packet Wrapped	100/5000
51279	Carta Integra	190/260	B1 720 x 1020	Packet Wrapped	100/5100
51284	Carta Integra	210/305	SRA2 450 x 640	Packet Wrapped	100/8600
51301	Carta Integra	210/305	SRA2 450 x 640	Bulk Packed	8600/8600
51282	Carta Integra	210/305	B2 520 x 720	Packet Wrapped	100/6400
51222	Carta Integra	210/305	B2 520 x 720	Bulk Packed	6400/6400
51281	Carta Integra	210/305	SRA1 640 x 900	Packet Wrapped	100/4300
51283	Carta Integra	210/305	B1 720 x 1020	Packet Wrapped	100/4300
51292	Carta Integra	235/355	SRA2 450 x 640	Packet Wrapped	100/6400
30582	Carta Integra	235/355	SRA2 450 x 640	Bulk Packed	6400/6400
51290	Carta Integra	235/355	B2 520 x 720	Packet Wrapped	100/6000
51416	Carta Integra	235/355	B2 520 x 720	Bulk Packed	6000/6000
51289	Carta Integra	235/355	SRA1 640 x 900	Packet Wrapped	100/3700
51291	Carta Integra	235/355	B1 720 x 1020	Packet Wrapped	100/3700
70563	Carta Integra	235/355	B1 720 x 1020	Bulk Packed	3700/3700
51296	Carta Integra	265/410	SRA2 450 x 640	Packet Wrapped	100/6200
51398	Carta Integra	265/410	SRA2 450 x 640	Bulk Packed	6200/6200
51401	Carta Integra	265/410	B2 520 x 720	Bulk Packed	6000/6000
51294	Carta Integra	265/410	B2 520 x 720	Packet Wrapped	100/6000
51399	Carta Integra	265/410	SRA1 640 x 900	Bulk Packed	3000/3000
51293	Carta Integra	265/410	SRA1 640 x 900	Packet Wrapped	100/3100
51400	Carta Integra	265/410	B1 720 x 1020	Bulk Packed	3100/3100
51295	Carta Integra	265/410	B1 720 x 1020	Packet Wrapped	100/3100
51409	Carta Integra	285/455	SRA2 450 x 640	Bulk Packed	5600/5600
51298	Carta Integra	285/455	SRA2 450 x 640	Packet Wrapped	100/5600
51420	Carta Integra	285/455	B2 520 x 720	Bulk Packed	5600/5600
51424	Carta Integra	285/455	B2 520 x 720	Packet Wrapped	100/5600
51297	Carta Integra	285/455	SRA1 640 x 900	Packet Wrapped	100/2900
51421	Carta Integra	285/455	B1 720 x 1020	Bulk Packed	2800/2800
51425	Carta Integra	285/455	B1 720 x 1020	Packet Wrapped	100/2800
51426	Carta Integra	315/505	SRA2 450 x 640	Packet Wrapped	100/3800
51422	Carta Integra	315/505	B2 520 x 720	Bulk Packed	3800/3800
51427	Carta Integra	315/505	B2 520 x 720	Packet Wrapped	100/3800
51468	Carta Integra	315/505	SRA1 640 x 900	Packet Wrapped	100/2000
51423	Carta Integra	315/505	B1 720 x 1020	Bulk Packed	2000/2000
51469	Carta Integra	315/505	B1 720 x 1020	Packet Wrapped	100/2000
51300	Carta Integra	330/535	SRA2 450 x 640	Packet Wrapped	100/4800
82723	Carta Integra	330/535	SRA1 640 x 900	Bulk Packed	2500/2500
51299	Carta Integra	330/535	SRA1 640 x 900	Packet Wrapped	100/2400



INCADA SILK

Incada Silk is a fully coated white backed folding box board (GC1), which gives excellent results in both solid print and half tone illustrations. Incada is ideal for a wide range of applications such as book covers, food packaging, health care and confectionery markets, header cards and point of sale.

- New improved shade
- Excellent smoothness and printability is delivered from the pre-coat and two blade coats
- The white backed reverse side is also lick coated and can comfortably support 4 colour printing
- A wide range of calipers and sizes available from stock

What is it?

Incada Silk is a one sided white back folding box board (GC1) with a lick coated reverse

Suitable for

Screen & Offset Litho

Major attributes

FSC and Bulk ratio, ISO 9001, ISO 14001 and ECF

Sheet sizes

SRA1, SRA2, B1 and B2

Available

Next day from stock.

Further details

Contact your regional sales office for further information.

INCADA SILK (GC1)

Technical Specifications

SPEC	GSM	220	240	260	280	300	325	350
Thickness		325	365	405	445	485	540	590
Whiteness CIE ISO11475 (%)		112.5	112.5	112.5	112.5	112.5	112.5	112.5
Bulk (µm)		1.48	1.52	1.56	1.59	1.62	1.66	1.69
Smoothness (µm) ISO8791		1.0	1.0	1.0	1.0	1.0	1.0	1.0
Stiffness (Taber 15 degree - ISO2493)								
MD		9.8	13.1	16.9	21.3	26.3	33	40.2
CD		4.5	5.9	7.7	9.7	12	15	18.2

Incada Silk board composition:

	Top Coating (Blade)
	Base Coating (Blade)
	Bleached Chemical Pulp
	Bleached thermo-mechanical Pulp
	Bleached Chemical Pulp
	Blade Coating

Range Chart

ITEM NUMBER	PRODUCT REFERENCE	GSM/MIC	DIMENSIONS	PACKED	PACK/PALLET QUANTITY
84023	Incada Silk	220/325	SRA2 450 x 640	Packet Wrapped	100/6000
84024	Incada Silk	220/325	SRA2 450 x 640	Bulk Packed	6000/6000
84036	Incada Silk	220/325	B2 520 x 720	Packet Wrapped	100/6000
84037	Incada Silk	220/325	B2 520 x 720	Bulk Packed	6000/6000
84047	Incada Silk	220/325	SRA1 640 x 900	Packet Wrapped	100/3000
84048	Incada Silk	220/325	SRA1 640 x 900	Bulk Packed	3000/3000
84070	Incada Silk	220/325	B1 720 x 1020	Packet Wrapped	100/3000
84071	Incada Silk	220/325	B1 720 x 1020	Bulk Packed	3000/3000
84025	Incada Silk	240/365	SRA2 450 x 640	Packet Wrapped	100/5600
84038	Incada Silk	240/365	B2 520 x 720	Packet Wrapped	100/6000
84039	Incada Silk	240/365	B2 520 x 720	Bulk Packed	6000/6000
84049	Incada Silk	240/365	SRA1 640 x 900	Packet Wrapped	100/3000
84050	Incada Silk	240/365	SRA1 640 x 900	Bulk Packed	3000/3000
84072	Incada Silk	240/365	B1 720 x 1020	Packet Wrapped	100/3000
84073	Incada Silk	240/365	B1 720 x 1020	Bulk Packed	3000/3000
84026	Incada Silk	260/405	SRA2 450 x 640	Packet Wrapped	100/5000
84040	Incada Silk	260/405	B2 520 x 720	Packet Wrapped	100/5000
84051	Incada Silk	260/405	SRA1 640 x 900	Packet Wrapped	100/2500
84074	Incada Silk	260/405	B1 720 x 1020	Packet Wrapped	100/2500
84075	Incada Silk	260/405	B1 720 x 1020	Bulk Packed	2500/2500
84028	Incada Silk	280/445	SRA2 450 x 640	Packet Wrapped	100/5000
84041	Incada Silk	280/445	B2 520 x 720	Packet Wrapped	100/5000
84042	Incada Silk	280/445	B2 520 x 720	Bulk Packed	5000/5000
84052	Incada Silk	280/445	SRA1 640 x 900	Packet Wrapped	100/2500
84076	Incada Silk	280/445	B1 720 x 1020	Packet Wrapped	100/2500
84078	Incada Silk	280/445	B1 720 x 1020	Bulk Packed	2500/2500
84029	Incada Silk	300/485	SRA2 450 x 640	Packet Wrapped	100/4000
84030	Incada Silk	300/485	SRA2 450 x 640	Bulk Packed	4000/4000
84044	Incada Silk	300/485	B2 520 x 720	Packet Wrapped	100/4000
84053	Incada Silk	300/485	SRA1 640 x 900	Packet Wrapped	100/2000
84054	Incada Silk	300/485	SRA1 640 x 900	Bulk Packed	2000/2000
84079	Incada Silk	300/485	B1 720 x 1020	Packet Wrapped	100/2000
84080	Incada Silk	300/485	B1 720 x 1020	Bulk Packed	2000/2000
84031	Incada Silk	325/540	SRA2 450 x 640	Packet Wrapped	100/3400
84032	Incada Silk	325/540	SRA2 450 x 640	Bulk Packed	3400/3400
84045	Incada Silk	325/540	B2 520 x 720	Packet Wrapped	100/3500
84055	Incada Silk	325/540	SRA1 640 x 900	Packet Wrapped	100/2000
84058	Incada Silk	325/540	SRA1 640 x 900	Bulk Packed	2000/2000
84034	Incada Silk	350/590	SRA2 450 x 640	Packet Wrapped	100/3000
84046	Incada Silk	350/590	B2 520 x 720	Packet Wrapped	100/3000
84059	Incada Silk	350/590	SRA1 640 x 900	Packet Wrapped	100/2000
84069	Incada Silk	350/590	SRA1 640 x 900	Bulk Packed	2000/2000
84082	Incada Silk	350/590	B1 720 x 1020	Packet Wrapped	100/1500
84083	Incada Silk	350/590	B1 720 x 1020	Bulk Packed	1500/1500





INCADA EXEL

Incada Excel, is fully coated on the printing side with a cream reverse (GC2). Incada is ideal for a wide range of applications such as book covers, food packaging, health care and confectionery markets, tobacco and point of sale.

- New improved shade
- Improved yield and stiffness enhances packing performance
- Excellent smoothness and printability is delivered from the pre-coat and two blade coats
- The cream backed reverse side can also be printed for less demanding printing requirements
- Hard sized as standard for high water resistance demands, such as refrigeration and chiller cabinet products
- A wide range of calipers and sizes available from stock

What is it?

Incada Exel is a one sided cream back folding box board (GC2) hard sized as standard

Suitable for

Screen & Offset Litho

Major attributes

FSC and Bulk ratio, ISO 9001, ISO 14001 and ECF

Sheet sizes

SRA1, SRA2, B1 and B2

Available

Next day from stock.

Further details

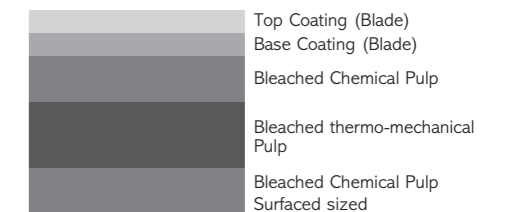
Contact your regional sales office for further information.

INCADA EXEL (GC2)

Technical Specifications

SPEC	GSM	235	255	280	325
Thickness (µm)		400	450	490	590
Whiteness CIE ISO11475 (%)		120	120	120	120
ISO Brightness (%)		91.5	91.5	91.5	91.5
Surface roughness PPS (µm)		0.9	0.9	0.9	0.9
Board gloss 75° (%)		50	50	50	50
MD		29.4	38.4	49.2	77.4
CD		11.9	15.8	20.5	32.8

Incada Exel board composition:



Range Chart

ITEM NUMBER	PRODUCT REFERENCE	GSM/MIC	DIMENSIONS	PACKED	PACK/PALLET QUANTITY
83997	Incada Exel	235/400	SRA2 450 x 640	Packet Wrapped	100/5000
83998	Incada Exel	235/400	SRA2 450 x 640	Bulk Packed	5000/5000
83999	Incada Exel	255/450	SRA2 450 x 640	Packet Wrapped	100/4000
84000	Incada Exel	255/450	SRA2 450 x 640	Bulk Packed	4000/4000
84002	Incada Exel	280/490	SRA2 450 x 640	Packet Wrapped	100/4000
84003	Incada Exel	280/490	SRA2 450 x 640	Bulk Packed	4000/4000
84004	Incada Exel	325/590	SRA2 450 x 640	Packet Wrapped	100/4000
84005	Incada Exel	325/590	SRA2 450 x 640	Bulk Packed	4000/4000
84006	Incada Exel	235/400	B2 520 x 720	Packet Wrapped	100/5000
84007	Incada Exel	235/400	B2 520 x 720	Bulk Packed	5000/5000
84008	Incada Exel	255/450	B2 520 x 720	Packet Wrapped	100/4000
84009	Incada Exel	255/450	B2 520 x 720	Bulk Packed	4000/4000
84010	Incada Exel	280/490	B2 520 x 720	Packet Wrapped	100/4000
84011	Incada Exel	280/490	B2 520 x 720	Bulk Packed	4000/4000
84012	Incada Exel	280/490	SRA1 640 x 900	Bulk Packed	2500/2500
84013	Incada Exel	325/590	SRA1 640 x 900	Packet Wrapped	100/1500
84014	Incada Exel	235/400	B1 720 x 1020	Packet Wrapped	100/2400
84015	Incada Exel	235/400	B1 720 x 1020	Bulk Packed	2400/2400
84016	Incada Exel	255/450	B1 720 x 1020	Packet Wrapped	100/2000
84017	Incada Exel	255/450	B1 720 x 1020	Bulk Packed	2000/2000
84019	Incada Exel	280/490	B1 720 x 1020	Packet Wrapped	100/2000
84020	Incada Exel	280/490	B1 720 x 1020	Bulk Packed	2000/2000
84021	Incada Exel	325/590	B1 720 x 1020	Packet Wrapped	100/2000
84022	Incada Exel	325/590	B1 720 x 1020	Bulk Packed	2000/2000

SIMCOTE

Simcote is a fully coated cream back folding box board (GC2), with a double blade coating on the front, which delivers outstanding print performance. The part mechanical centre allows for excellent foldability.

- Excellent smoothness and printability is delivered from two blade coats
- Hard sized as standard for high water resistance demands, such as refrigeration and chiller cabinet products
- A wide range of calipers and sizes available from stock

What is it?
Simcote is a one sided cream back folding box board (GC2)

Suitable for
Screen & Offset Litho

Major attributes
PEFC, ISO 9001, ISO 14001 and ECF

Sheet sizes
SRA1, SRA2, B1 and B2

Available
Next day from stock.

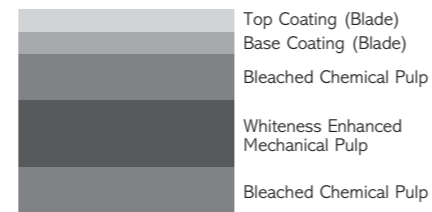
Further details
Contact your regional sales office for further information.

SIMCOTE (GC2)

Technical Specifications

SPEC	GSM	200	210	225	250	275	315	340
Bending stiffness CD mNm		4.7	5.8	7.0	9.7	12.6	18.9	22.1
Bending stiffness MD mNm		10.5	12.1	15.0	19.2	25.2	37.8	45.2
Thickness mm		0.350	0.375	0.400	0.450	0.500	0.600	0.650
Brightness top %		84	84	84	84	84	84	84
Gloss %		35	35	35	35	35	35	35

Simcote board composition:



Range Chart

ITEM NUMBER	PRODUCT REFERENCE	GSM/MIC	DIMENSIONS	PACKED	PACK/PALLET QUANTITY
31134	Simcote Cream	200/350	SRA2 450 x 640	Packet Wrapped	100/5200
31275	Simcote Cream	200/350	B2 520 x 720	Packet Wrapped	200/5200
31274	Simcote Cream	200/350	B2 520 x 720	Bulk Packed	3000/3000
31351	Simcote Cream	200/350	SRA1 640 x 900	Bulk Packed	3000/3000
31536	Simcote Cream	200/350	B1 720 x 1020	Bulk Packed	2900/2900
31368	Simcote Cream	210/375	SRA1 640 x 900	Bulk Packed	3000/3000
31548	Simcote Cream	210/375	B1 720 x 1020	Bulk Packed	3000/3000
31147	Simcote Cream	225/400	SRA2 450 x 640	Packet Wrapped	100/4400
31135	Simcote Cream	225/400	SRA2 450 x 640	Bulk Packed	4600/4600
31289	Simcote Cream	225/400	B2 520 x 720	Packet Wrapped	100/4400
31276	Simcote Cream	225/400	B2 520 x 720	Bulk Packed	5400/5400
31371	Simcote Cream	225/400	SRA1 640 x 900	Packet Wrapped	100/2800
31551	Simcote Cream	225/400	B1 720 x 1020	Packet Wrapped	100/2800
31549	Simcote Cream	225/400	B1 720 x 1020	Bulk Packed	2800/2800
31216	Simcote Cream	250/450	SRA2 450 x 640	Packet Wrapped	100/3800
31187	Simcote Cream	250/450	SRA2 450 x 640	Bulk Packed	3800/3800
31340	Simcote Cream	250/450	B2 520 x 720	Packet Wrapped	100/4000
31319	Simcote Cream	250/450	B2 520 x 720	Bulk Packed	2400/2400
31417	Simcote Cream	250/450	SRA1 640 x 900	Packet Wrapped	100/2500
31401	Simcote Cream	250/450	SRA1 640 x 900	Bulk Packed	2500/2500
31576	Simcote Cream	250/450	B1 720 x 1020	Packet Wrapped	100/2500
31415	Simcote Cream	250/450	B1 720 x 1020	Bulk Packed	2500/2500
31258	Simcote Cream	275/500	SRA2 450 x 640	Packet Wrapped	100/3000
31251	Simcote Cream	275/500	SRA2 450 x 640	Bulk Packed	5200/5200
31584	Simcote Cream	275/500	B1 720 x 1020	Packet Wrapped	100/2200
31425	Simcote Cream	275/500	B1 720 x 1020	Bulk Packed	2200/2200
31348	Simcote Cream	275/500	B2 520 x 720	Packet Wrapped	100/3600
31341	Simcote Cream	275/500	B2 520 x 720	Bulk Packed	4600/4600
31435	Simcote Cream	275/500	SRA1 640 x 900	Packet Wrapped	100/2200
31418	Simcote Cream	275/500	SRA1 640 x 900	Bulk Packed	2200/2200
31273	Simcote Cream	315/600	SRA2 450 x 640	Packet Wrapped	100/3000
31350	Simcote Cream	315/600	B2 520 x 720	Packet Wrapped	100/4400
31349	Simcote Cream	315/600	B2 520 x 720	Bulk Packed	2100/2100
31533	Simcote Cream	315/600	SRA1 640 x 900	Packet Wrapped	100/2200
31443	Simcote Cream	315/600	SRA1 640 x 900	Bulk Packed	2200/2200
31603	Simcote Cream	315/600	B1 720 x 1020	Packet Wrapped	100/2200
31590	Simcote Cream	315/600	B1 720 x 1020	Bulk Packed	2200/2200
34815	Simcote Cream	340/650	SRA1 640 x 900	Bulk Packed	2000/2000
34822	Simcote Cream	340/650	B1 720 x 1020	Bulk Packed	2000/2000



CREAM BACK FOLDING BOX BOARD

A fully coated folding box board offering excellent print and conversion qualities. Cream Back Folding Boxboard (GC2) is a bulky and rigid carton board for general packaging. Typical end use areas are food, beverages, household and pharmaceuticals.

- Bright white shade
- Excellent printability and bulk
- Suitable for various conversion and finishing techniques
- Exceptional strength and folding characteristics

What is it?
One sided fully coated cream backed folding boxboard

Suitable for
Offset, Gravure, Flexo and Screen Printing

Major attributes
PEFC

Sheet sizes
SRA1, B1, 1067 x 1575mm, 1065 x 1575mm and 1510 x 2050mm.

Available
Next day from stock.

Further details
Contact your regional sales office for further information.

Range Chart

ITEM NUMBER	PRODUCT REFERENCE	GSM/MIC	DIMENSIONS	PACKED	PACK/PALLET QUANTITY
61513	Cream Back Folding Boxboard	250/390	SRA1 640 x 900	Packet Wrapped	1/3000
61509	Cream Back Folding Boxboard	250/390	SRA1 640 x 900	Bulk Packed	3000/3000
61515	Cream Back Folding Boxboard	250/390	B1 720 x 1020	Packet Wrapped	1/3000
61514	Cream Back Folding Boxboard	250/390	B1 720 x 1020	Bulk Packed	3000/3000
61523	Cream Back Folding Boxboard	250/390	1067 x 1575	Packet Wrapped	1/2000
61521	Cream Back Folding Boxboard	250/390	1067 x 1575	Bulk Packed	2000/2000
62061	Cream Back Folding Boxboard	300/510	SRA1 640 x 900	Packet Wrapped	1/2500
62064	Cream Back Folding Boxboard	300/510	SRA1 640 x 900	Bulk Packed	2500/2500
62066	Cream Back Folding Boxboard	300/510	B1 720 x 1020	Packet Wrapped	1/2500
62067	Cream Back Folding Boxboard	300/510	B1 720 x 1020	Bulk Packed	2500/2500
62068	Cream Back Folding Boxboard	300/510	1065 x 1575	Packet Wrapped	1/1000
62070	Cream Back Folding Boxboard	300/510	1065 x 1575	Bulk Packed	1000/1000
62071	Cream Back Folding Boxboard	300/510	1250 x 1850	Packet Wrapped	1/1000
62072	Cream Back Folding Boxboard	300/510	1250 x 1850	Bulk Packed	1000/1000
62080	Cream Back Folding Boxboard	300/510	1510 x 2050	Packet Wrapped	1/600
62089	Cream Back Folding Boxboard	300/510	1510 x 2050	Bulk Packed	600/600
61636	Cream Back Folding Boxboard	350/610	SRA1 640 x 900	Packet Wrapped	1/2200
61635	Cream Back Folding Boxboard	350/610	SRA1 640 x 900	Bulk Packed	1/2200
61704	Cream Back Folding Boxboard	350/610	B1 720 x 1020	Packet Wrapped	1/2100
61641	Cream Back Folding Boxboard	350/610	B1 720 x 1020	Bulk Packed	2100/2100
62095	Cream Back Folding Boxboard	350/610	1065 x 1575	Packet Wrapped	1/1000
62100	Cream Back Folding Boxboard	350/610	1065 x 1575	Bulk Packed	1000/1000
62101	Cream Back Folding Boxboard	350/610	1250 x 1850	Packet Wrapped	1/1000
62103	Cream Back Folding Boxboard	350/610	1250 x 1850	Bulk Packed	1000/1000
62109	Cream Back Folding Boxboard	350/610	1510 x 2050	Packet Wrapped	1/600
62110	Cream Back Folding Boxboard	350/610	1510 x 2050	Bulk Packed	600/600
61752	Cream Back Folding Boxboard	400/720	SRA1 640 x 900	Packet Wrapped	1/1800
61749	Cream Back Folding Boxboard	400/720	SRA1 640 x 900	Bulk Packed	1800/1800
61773	Cream Back Folding Boxboard	400/720	B1 720 x 1020	Packet Wrapped	1/1800
61753	Cream Back Folding Boxboard	400/720	B1 720 x 1020	Bulk Packed	1800/1800
97865	Cream Back Folding Boxboard	400/720	1065 x 1575	Packet Wrapped	1/1300
97869	Cream Back Folding Boxboard	400/720	1065 x 1575	Bulk Packed	1000/1000
61812	Cream Back Folding Boxboard	400/720	1510 x 2050	Packet Wrapped	1/600
61774	Cream Back Folding Boxboard	400/720	1510 x 2050	Bulk Packed	600/600



ESKA GREYBOARD

Eskaboard is a graphic solid board with the best lay flat, stay flat properties, made from 100% recovered paper.

What is it?

A graphic solid board made from 100% recovered paper.

Suitable for

Book Covers, Lever arch files, Ringbinders, Files, Albums, Diaries, Board games, Displays, Showcards, Puzzle and game boxes, Luxury Packaging

Major attributes

FSC® recycled (CU-COC-89179), Umweltzeichen (Blaue Engel), Foodstuffs and Consumer Goods Acts DIN EN 71, part 3 (safety and toys)

Sheet sizes

Extensive range of sizes available

Available

Next day from stock.

Further details

Contact your regional sales office for further information.

ESKABOARD

Range Chart

ITEM NUMBER	PRODUCT REFERENCE	GSM/MIC	DIMENSIONS	PACKED	PACK/PALLET QUANTITY
16091	Eskaboard	615/1000	635 x 760	Bundled	1/15
16093	Eskaboard	615/1000	760 x 1020	Bundled	1/24
16098	Eskaboard	1475/2400	SRA1 640 x 900	Bundled	1/24
84409	Eskaboard	300/490	SRA2 450 x 640	Bundled	1/14
84420	Eskaboard	300/490	SRA1 640 x 900	Bundled	1/14
84402	Eskaboard	465/750	A4 210 x 297	Bundled	1/54
84410	Eskaboard	465/750	SRA2 450 x 640	Bundled	1/14
84422	Eskaboard	465/750	SRA1 640 x 900	Bundled	1/14
84447	Eskaboard	465/750	760 x 1020	Bundled	1/18
84415	Eskaboard	570/900	SRA2 450 x 640	Bundled	1/14
84423	Eskaboard	570/900	SRA1 640 x 900	Bundled	1/14
84419	Eskaboard	770/1250	SRA2 450 x 640	Bundled	1/14
16074	Eskaboard	850/1500	SRA1 640 x 900	Bundled	1/18
16075	Eskaboard	850/1500	760 x 1020	Bundled	1/24
84424	Eskaboard	920/1500	SRA1 640 x 900	Bundled	1/14
84492	Eskaboard	920/1500	760 x 1020	Bundled	1/18
16077	Eskaboard	1140/1900	SRA1 640 x 900	Bundled	1/18
16078	Eskaboard	1170/1900	760 x 1020	Bundled	1/24
16080	Eskaboard	1325/2250	760 x 1020	Bundled	1/24
84430	Eskaboard	1385/2250	SRA1 640 x 900	Bundled	1/14
84494	Eskaboard	1385/2250	760 x 1020	Bundled	1/18
16088	Eskaboard	1600/2750	760 x 1020	Bundled	1/24
16082	Eskaboard	1750/3000	760 x 1020	Bundled	1/24
84441	Eskaboard	1845/3000	SRA1 640 x 900	Bundled	1/14
84495	Eskaboard	1845/3000	760 x 1020	Bundled	1/18
16083	Eskaboard	2150/3500	760 x 1020	Bundled	1/24

ESKA GREYBOARD

Range Chart

ITEM NUMBER	PRODUCT REFERENCE	GSM/MIC	DIMENSIONS	PACKED	PACK/PALLET QUANTITY
48021	Eska Greyboard	770/1200	635 x 890	Packet Wrapped	1/1000
44381	Eska Greyboard	770/1200	635 x 890	Bulk Packed	1000/1000
48023	Eska Greyboard	770/1200	715 x 1015	Packet Wrapped	1/1000
44382	Eska Greyboard	770/1200	715 x 1015	Bulk Packed	1000/1000
19542	Eska Greyboard	770/1200	1054 x 1562	Packet Wrapped	1/480
44383	Eska Greyboard	770/1200	1054 x 1562	Bulk Packed	480/480
48024	Eska Greyboard	770/1200	1845 x 1245	Packet Wrapped	1/400
19477	Eska Greyboard	770/1200	1845 x 1245	Bulk Packed	400/400
48025	Eska Greyboard	1075/1700	638 x 890	Packet Wrapped	1/700
44384	Eska Greyboard	1075/1700	638 x 890	Bulk Packed	700/700
48026	Eska Greyboard	1075/1700	715 x 1015	Packet Wrapped	1/600
44385	Eska Greyboard	1075/1700	715 x 1015	Bulk Packed	600/600
19516	Eska Greyboard	1075/1700	1054 x 1562	Packet Wrapped	1/400
44386	Eska Greyboard	1075/1700	1054 x 1562	Bulk Packed	400/400
48027	Eska Greyboard	1075/1700	1245 x 1845	Packet Wrapped	1/300
19126	Eska Greyboard	1075/1700	1245 x 1845	Bulk Packed	300/300
48028	Eska Greyboard	1170/1900	638 x 890	Packet Wrapped	1/600
44387	Eska Greyboard	1170/1900	638 x 890	Bulk Packed	600/600
48029	Eska Greyboard	1170/1900	715 x 1015	Packet Wrapped	1/600
44388	Eska Greyboard	1170/1900	715 x 1015	Bulk Packed	600/600
19580	Eska Greyboard	1170/1900	1054 x 1562	Packet Wrapped	1/350
44389	Eska Greyboard	1170/1900	1054 x 1562	Bulk Packed	350/350
48030	Eska Greyboard	1170/1900	1505 x 2045	Packet Wrapped	1/150
44391	Eska Greyboard	1170/1900	1505 x 2045	Bulk Packed	150/150
19545	Eska Greyboard	1170/1900	1845 x 1245	Packet Wrapped	1/250
44390	Eska Greyboard	1170/1900	1845 x 1245	Bulk Packed	250/250
48031	Eska Greyboard	1385/2250	1140 x 640	Packet Wrapped	1/500
44392	Eska Greyboard	1385/2250	1140 x 640	Bulk Packed	500/500

ESKA WHITE LINED GREYBOARD

Range Chart

ITEM NUMBER	PRODUCT REFERENCE	GSM/MIC	DIMENSIONS	PACKED	PACK/PALLET QUANTITY
48033	Eska White Lined Greyboard	785/1200	635 x 890	Packet Wrapped	1/1000
44372	Eska White Lined Greyboard	785/1200	635 x 890	Bulk Packed	1000/1000
48034	Eska White Lined Greyboard	785/1200	715 x 1015	Packet Wrapped	1/1000
44373	Eska White Lined Greyboard	785/1200	715 x 1015	Bulk Packed	1000/1000
19527	Eska White Lined Greyboard	785/1200	1054 x 1562	Packet Wrapped	1/550
44374	Eska White Lined Greyboard	785/1200	1054 x 1562	Bulk Packed	550/550
48036	Eska White Lined Greyboard	785/1200	1505 x 2045	Packet Wrapped	1/300
44376	Eska White Lined Greyboard	785/1200	1505 x 2045	Bulk Packed	300/300
48035	Eska White Lined Greyboard	785/1200	1845 x 1245	Packet Wrapped	1/400
44375	Eska White Lined Greyboard	785/1200	1845 x 1245	Bulk Packed	400/400
48038	Eska White Lined Greyboard	1075/1700	715 x 1015	Packet Wrapped	1/600
44377	Eska White Lined Greyboard	1075/1700	715 x 1015	Bulk Packed	600/600
19571	Eska White Lined Greyboard	1075/1700	1054 x 1562	Packet Wrapped	1/400
44378	Eska White Lined Greyboard	1075/1700	1054 x 1562	Bulk Packed	400/400
48039	Eska White Lined Greyboard	1075/1700	1845 x 1245	Packet Wrapped	1/300
19144	Eska White Lined Greyboard	1075/1700	1845 x 1245	Bulk Packed	300/300
48041	Eska White Lined Greyboard	1200/1900	635 x 890	Packet Wrapped	1/600
44379	Eska White Lined Greyboard	1200/1900	635 x 890	Bulk Packed	600/600
48042	Eska White Lined Greyboard	1200/1900	715 x 1015	Packet Wrapped	1/600
44380	Eska White Lined Greyboard	1200/1900	715 x 1015	Bulk Packed	600/600
48043	Eska White Lined Greyboard	1200/1900	1054 x 1562	Packet Wrapped	1/350
49792	Eska White Lined Greyboard	1200/1900	1054 x 1562	Bulk Packed	350/350
48044	Eska White Lined Greyboard	1200/1900	1060 x 1570	Packet Wrapped	1/350
19409	Eska White Lined Greyboard	1200/1900	1060 x 1570	Bulk Packed	350/350
48045	Eska White Lined Greyboard	1200/1900	1195 x 1595	Packet Wrapped	1/350
19411	Eska White Lined Greyboard	1200/1900	1195 x 1595	Bulk Packed	350/350
19642	Eska White Lined Greyboard	1200/1900	1845 x 1245	Packet Wrapped	1/250
19166	Eska White Lined Greyboard	1200/1900	1845 x 1245	Bulk Packed	250/250
48046	Eska White Lined Greyboard	1200/1900	2045 x 1505	Packet Wrapped	1/200
19169	Eska White Lined Greyboard	1200/1900	2045 x 1505	Bulk Packed	200/200

KENDAL MANILLA

Kendal Manilla is a strong, manilla board now firmly established as the benchmark for high quality within the filing and stationery markets. Use Kendal Manilla where you need the assurance of a high quality manilla board offering good printing and converting performance.

- Excellent smoothness and printability is delivered from two blade coats
- Hard sized as standard for high water resistance demands, such as refrigeration and chiller cabinet products
- A wide range of calipers and sizes available from stock

What is it?
A strong reliable high quality board

Suitable for
Dividers, folders and stationery

Major attributes
ISO 14001, ISO 9001, EN 71/3:1988 D Safety of Toys

Sheet sizes
520 x 740mm and 560 x 740mm

Available
Next day from stock.

Further details
Contact your regional sales office for further information.

KENDAL MANILLA

Technical Specifications

SPEC	GSM	180	225	270	315	485
Smoothness Bendtsen (ml/min)		400	400	400	800	400
Moisture (%)		7.5	7.5	7.5	7.5	7.5
Burst (kPa)		415	520	600	630	1500
Thickness (mic)		215	270	325	380	560

Range Chart

ITEM NUMBER	PRODUCT REFERENCE	GSM/MIC	DIMENSIONS	PACKED	PACK/PALLET QUANTITY
93052	Kendal Manilla Buff	180/215	Double Crown 520 x 775	Packet Wrapped	10000/22750
93053	Kendal Manilla Buff	225/260	Double Crown 520 x 775	Packet Wrapped	8000/23600
93054	Kendal Manilla Buff	270/315	Double Crown 520 x 775	Packet Wrapped	6250/17875
93055	Kendal Manilla Buff	315/365	Double Crown 520 x 775	Packet Wrapped	5750/14500
93056	Kendal Manilla Buff	315/365	560 x 740	Packet Wrapped	5750/2125
93057	Kendal Manilla Buff	485/560	560 x 740	Packet Wrapped	3800/0
93058	Kendal Manilla Blue	180/215	Double Crown 520 x 775	Packet Wrapped	10000/4250
93059	Kendal Manilla Blue	225/260	Double Crown 520 x 775	Packet Wrapped	8000/1800
93060	Kendal Manilla Blue	270/315	Double Crown 520 x 775	Packet Wrapped	6250/4125
93061	Kendal Manilla Blue	316/365	560 x 740	Packet Wrapped	5750/6250
93065	Kendal Manilla Pink	270/315	520 x 775	Packet Wrapped	6250/3000
93066	Kendal Manilla Pink	315/365	560 x 740	Packet Wrapped	5750/1375
93070	Kendal Manilla Red	270/315	Double Crown 520 x 775	Packet Wrapped	6250/500
93074	Kendal Manilla Green	225/260	Double Crown 520 x 775	Packet Wrapped	8000/2200
93075	Kendal Manilla Green	270/315	Double Crown 520 x 775	Packet Wrapped	6250/3000
93076	Kendal Manilla Green	315/365	560 x 740	Packet Wrapped	5750/5625
93079	Kendal Manilla Yellow	225/260	Double Crown 520 x 775	Packet Wrapped	10000/3000
93080	Kendal Manilla Yellow	270/315	Double Crown 520 x 775	Packet Wrapped	6250/3500
93081	Kendal Manilla Yellow	315/365	560 x 740	Packet Wrapped	5750/3125
93084	Kendal Manilla Orange	225/260	Double Crown 520 x 775	Packet Wrapped	10000/2600

CHALLENGER MANILLA

Challenger Manilla is a UK manufactured board produced from 80% recovered fibre.

- UK manufactured
- 80% recovered fibre used in manufacture

What is it?
A UK manufactured board made from 80% recovered fibre

Suitable for
Files, folders, covers and garment tags

Major attributes
UK manufactured 80% recovered fibre

Sheet sizes
Double Crown and SRA2

Available
Next day from stock.

Further details
Contact your regional sales office for further information.

CHALLENGER MANILLA

Range Chart

ITEM NUMBER	PRODUCT REFERENCE	GSM	DIMENSIONS	PACKED	PACK/PALLET QUANTITY
85083	Challenger Manilla Buff	180	Double Crown 520 x 775	Packet Wrapped	250/10000
85086	Challenger Manilla Buff	220	SRA2 450 x 640	Packet Wrapped	250/10000
85084	Challenger Manilla Buff	220	Double Crown 520 x 775	Packet Wrapped	200/8000
85087	Challenger Manilla Buff	250	SRA2 450 x 640	Packet Wrapped	250/10000
85085	Challenger Manilla Buff	250	Double Crown 520 x 775	Packet Wrapped	200/7000

